



Norwood Road, Herne Hill, SE24

3 bedroom flat - conversion for sale

£675,000

Share of Freehold

Property Details

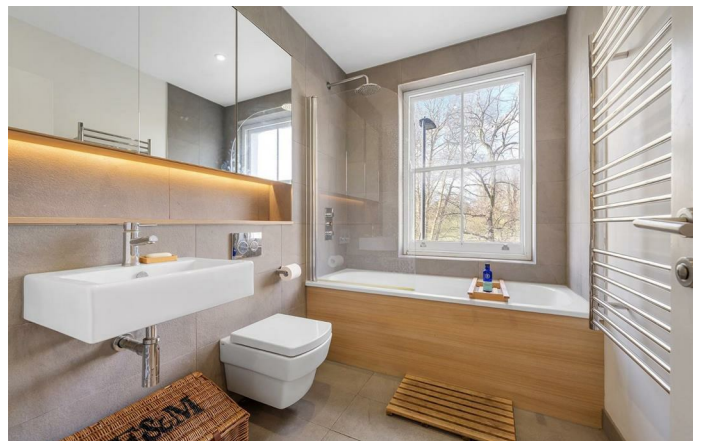
A beautifully appointed three double bedroom split-level Victorian conversion enjoying stunning views across Brockwell Park, offering nearly 1,000 square feet of immaculate internal accommodation. Accessed via the ground floor, stairs rise through the upper levels where the home is arranged over various floors, creating a strong sense of privacy and separation. Elevated above the street, the flat is bright and airy throughout, with a wonderfully leafy outlook and uninterrupted park views. The centrepiece of the property is the impressive L-shaped open-plan reception and kitchen, spanning the full width of the building. Sash windows flood the space with natural light, framing the park beautifully. Wooden flooring runs seamlessly throughout, complemented by bespoke media and wine storage. The shaker-style kitchen offers integrated appliances, generous storage and a sociable dining layout, with pocket doors enhancing the open feel. Three well-proportioned double bedrooms feature fitted wardrobes and soft carpeting. The principal bedroom boasts park views and a luxurious en-suite, while a second bathroom serves the remaining rooms. Newly converted six years ago, the property remains in excellent condition throughout.

Council tax band D

EPC rating D (67)

Features

- Three double bedrooms
- Two bathrooms
- Victorian conversion
- Overlooking Brockwell Park
- Almost 1,000 square feet
- Split over various levels
- Amenities of central Herne Hill a four minute stroll
- Brixton a fifteen-minute walk through the Park
- Short stroll to Herne Hill and Tulse Hill stations
- Share of freehold





Norwood Road, Herne Hill, SE24

Norwood Road, SE24

3 Bedroom Flat

APPROXIMATE GROSS INTERNAL AREA: 957 SQ FT / 89 SQ M



While we try our very best, floor plans are produced as a guide only and we take no responsibility for the precise accuracy with which any property is represented.

Norwood Road, Herne Hill, SE24

